

# HML SERIES LED STADIUM FLOOD LIGHTS

HML-180-600W-XXK-CLR-480V  
HIGH-LUMEN HIGH-MAST ROADWAY LIGHT

**WESTGATE**  
THE FUTURE IS HERE...AND IT'S QUITE BRIGHT!

Customer Name: \_\_\_\_\_

Project Name: \_\_\_\_\_

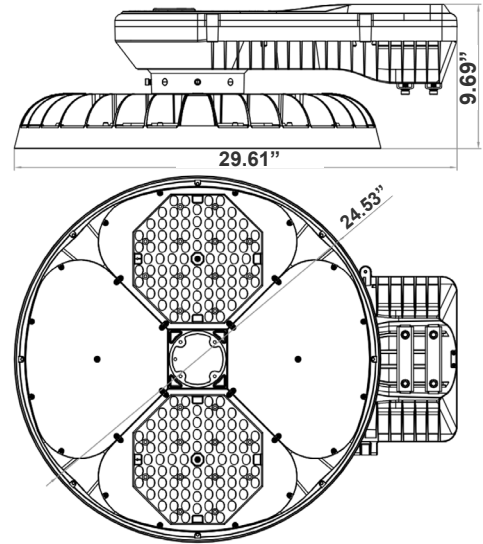
Note: \_\_\_\_\_ Type: \_\_\_\_\_



Avail Finishes:



Ideal for Stadium lighting, Sports fields, parking lots, docks ,railway and container yards, Architectural lighting, Industrial and commercial exterior lighting, trade shows, exhibitions



9.69"(H) x 29.61"(W) x 24.53"(D)

## Features

- Die-Cast Aluminum Housing with Powder Coat Finish (Black and Gray)
- LED: SMD5050
- Specify 3 Watt Stops
- 7-year Warranty
- Lens: Prismatic Polycarbonate Lens

## Technical Specifications

### Electrical:

- Voltage: 277-480V AC 60Hz
- Wattage: 180W~600W, Specify 3 Watt Stops
- Power Factor: >0.90
- Efficacy: 145LPW

### Mechanical:

- Die-Cast Aluminum Housing with Powder Coat Finish (Black and Gray)
- Cord type: 3' SJTW 18/3 AWG Cable
- Operating Temperature: -40°F to 113°F
- IP Rating: IP65, Suitable for Wet Locations
- 7-year Warranty

### Lighting:

- Dimming: 0-10V Dimming
- Lens: Prismatic Polycarbonate Lens
- LED: SMD5050
- Total lumens: 87000LM
- Color Temperatures: 4000K/4500K/5000K/5700K Specify
- Color Rendering Index: CRI ≥ 70
- Rated Life: 70,000 Hrs
- Beam Angle: 155 x155°

### Applications:

- Port Container Facilities
- Highways and Interchanges
- Rail Yards
- Correctional Facilities
- Large Area Industrial
- Military Installations
- Airports
- Truck Stops
- Toll Plazas
- Square Plazas
- Shipyards
- Airports
- Wharves
- High Mast and Contour Lighting

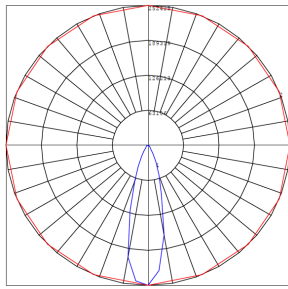
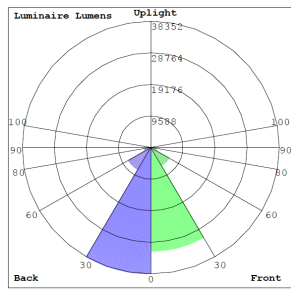


Phone: (877) 805-2252 | Fax: (877) 805-2252  
www.westgatemfg.com |

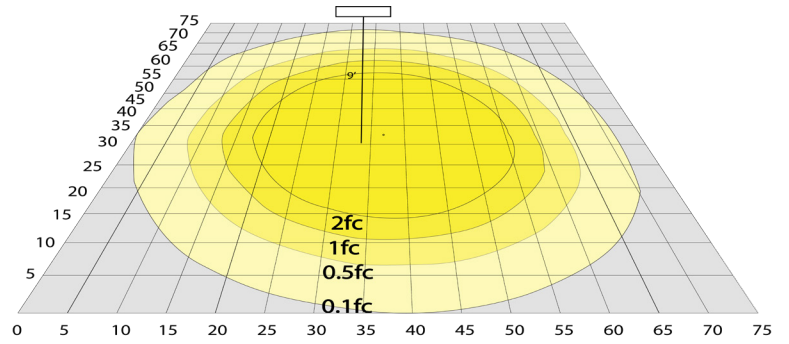


WG-08152024

## Photometrics: HML-180-600W-XXK-CLR-480V



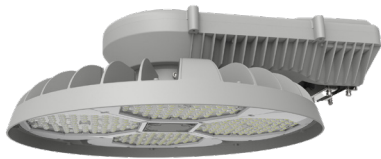
BUG Rating: B4-U0-G3



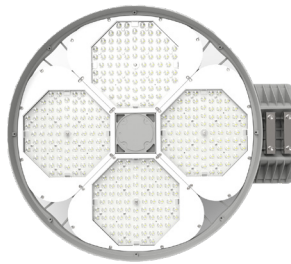
Area 75'x 75' Mounting Height: 9'

## Other Views:

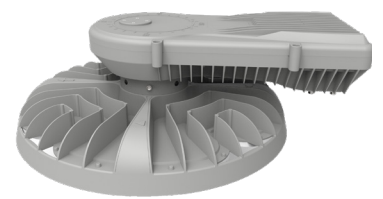
Gray:



Side View



Front View



Back View

Black:



Side View



Front View



Back View

## Sample Ordering

Model	Watt	Watt	Color Temp.	Finishes	Voltage
HML	180	600W	XXK	CLR	480V
			40K = 4000K 45K = 4500K 50K = 5000K 57K = 5700K	BK = BLACK GY = GRAY	

## Accessories:

Blank = No Option For Accessories  
 HML-SH1-CLR = HML High-Mast Glare Shield For Up To 750W Version. Specify Bk Or Cy  
 HML-SCK = HML High-Mast NEMA Socket And Shorting Cap Pre-Installed

## ACCESSORIES:



HML-SH1-CLR



HML-SCK

